

Crystal Springs Creek Bank Stabilization Project (Rio Vista to S River Rd)

Project Fact Sheet



Project Overview

Since the passage of Proposition P on August 2, 2016, the Department of Engineering, Department of Public Works, and the Stormwater Task Force have prioritized stormwater projects across the City. The Task Force has recommended 24 projects to be completed including creek bank stabilization along Crystal Springs Creek between Rio Vista Drive and S River Road. Several properties along Crystal Springs Creek have experienced property loss due to creek bank erosion. Engineering evaluation indicated that the banks along the creek are undergoing erosion due to channel widening. The project will stabilize this section of creek by constructing new retaining walls, placing in-stream grade controls, reshaping the bank slopes, and restoring the banks with a combination of rock and native vegetation.

What Improvements Can I Expect?

- Improved channel and bank stability
 - Reduced bank erosion and property loss for properties directly adjacent to Crystal Springs Creek
- Construction of in-stream rock vanes and grade controls
- Reshaped bank slopes to stable grades
- New retaining walls in areas where there is not space to reshape the bank slopes
- Bank slope restoration with a combination of rock and native plant species
- Protection and replacement of existing sanitary sewers in and adjacent to the creek

Project Timeline

Winter/Spring '20

Open House
Utility Coordination

Spring '20 – Fall '20

Obtain Right-Of-Way & Easements
Finalize Design Plans
Obtain Permits

Fall '20 – Spring '21

Construction

Need more information?

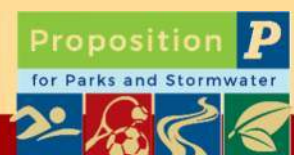
The City's website www.stcharlescitymo.gov contains an abundance of city information including a webpage dedicated to the Crystal Springs Creek Bank Stabilization project.

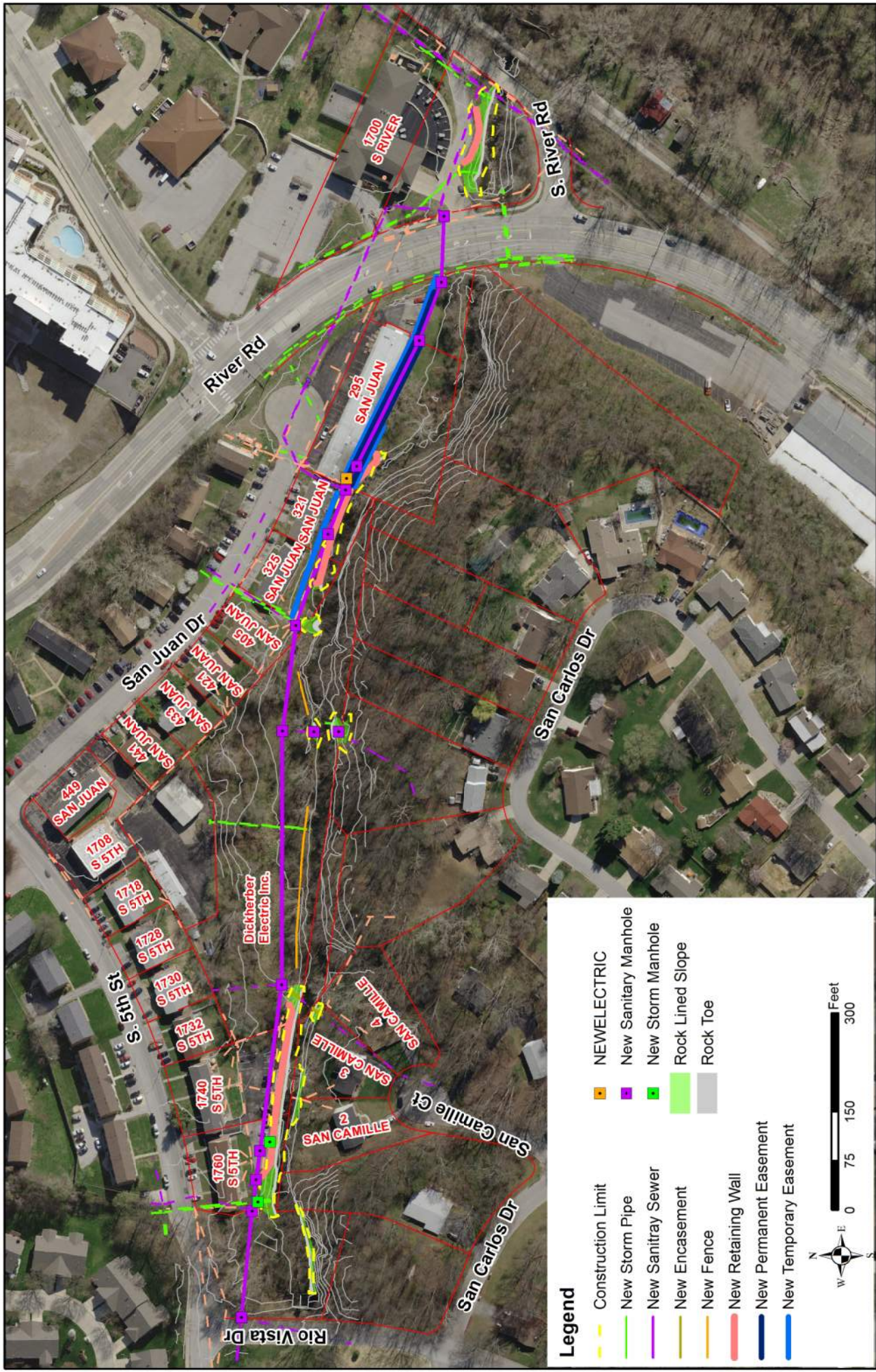
We want to hear from you! Visit the project webpage for the link to take a quick survey.

From the home page go to Government/Departments/Engineering/Projects/Boschert & Crystal Springs Bank Stabilization

Questions: Contact the Department of Engineering at 636.949.3237

Engineering.department@stcharlescitymo.gov





Legend

- Construction Limit
- New Storm Pipe
- New Sanitary Sewer
- New Encasement
- New Fence
- New Retaining Wall
- New Permanent Easement
- New Temporary Easement
- NEWELLECTRIC
- New Sanitary Manhole
- New Storm Manhole
- Rock Lined Slope
- Rock Toe



**Crystal Creek between Rio Vista Drive and South River Rd
Bank Stabilization Project
Proposed Design Exhibit**

City of St. Charles
St. Charles County, Missouri

